



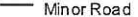
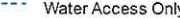




Legend

Emergency Services

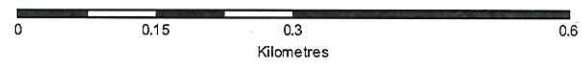
-  Hospital
-  Ambulance Base
-  Fire Station
-  Police Station

Roads

-  Major Road
-  Minor Road
-  Water Access Only
-  Forest Access
-  Parcel Information

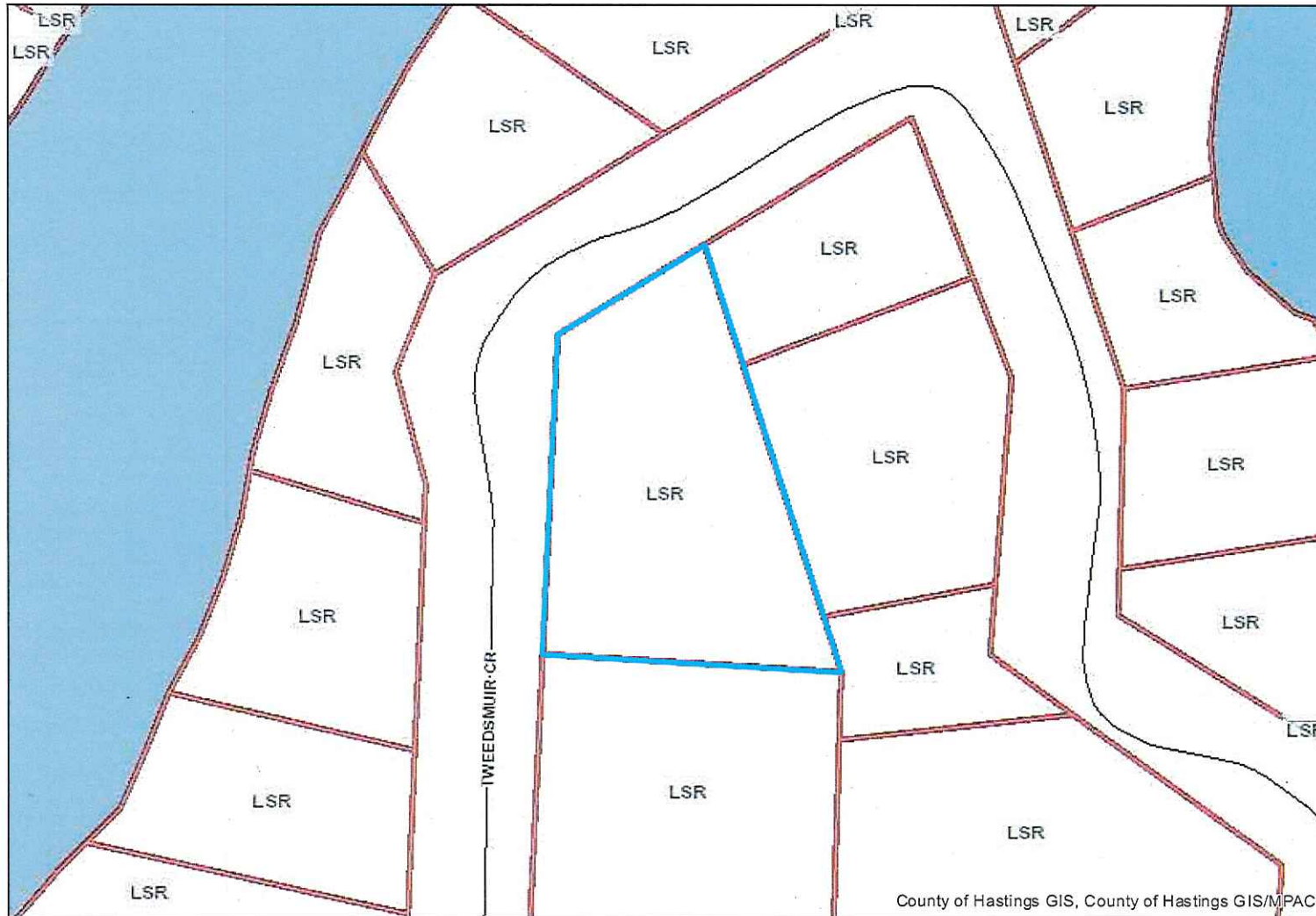


This map has been produced from the County of Hastings Online Mapping Application (www.hastingscounty.com)
 Data Sources: Ontario GeoSpatial Data Exchange (OGDE), Municipal Property Assessment Corporation (MPAC) & County of Hastings. This product is for informational purposes only and may not have been prepared for, or be suitable for legal, engineering, or surveying purposes. The County of Hastings disclaims all responsibility for errors, omissions or inaccuracies in this publication.



Map Scale: 1:7,500

Map created: 5/30/2018
 Restricted Site



Legend

Emergency Services

-  Hospital
-  Ambulance Base
-  Fire Station
-  Police Station

Roads

-  Major Road
-  Minor Road
-  Water Access Only
-  Forest Access
-  Parcel Information

Zoning Description

-  Zoning
-  EP
-  ES-EW

County of Hastings GIS, County of Hastings GIS/MPAC

This map has been produced from the County of Hastings Online Mapping Application (www.hastingscounty.com)
 Data Sources: Ontario GeoSpatial Data Exchange (OGDE), Municipal Property Assessment Corporation (MPAC) & County of Hastings. This product is for informational purposes only and may not have been prepared for, or be suitable for legal, engineering, or surveying purposes. The County of Hastings disclaims all responsibility for errors, omissions or inaccuracies in this publication.



Map Scale: 1:1,000



Map created: 5/30/2018

Restricted Site